

Digital (LED) Bus Advertising Displays

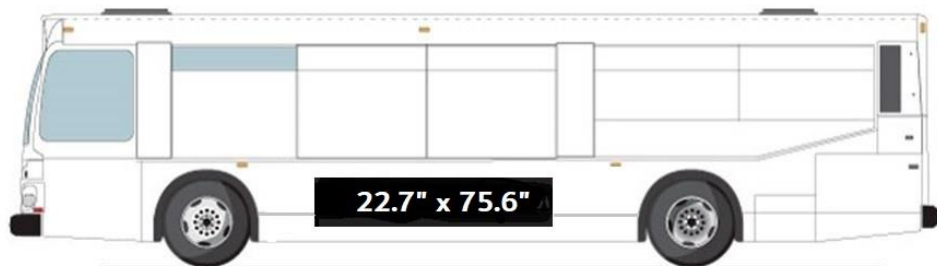


LED Digital Bus side displays are manufactured by **YAHAM**
a world leader in LED innovation and display technology

Available in two sizes for the Queen Version and one size for the King

Queen

2.66 mm pitch
22.7" H x 75.6" W



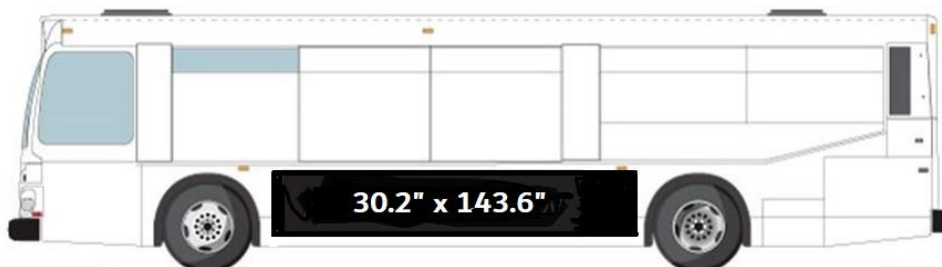
Queen

2.66 mm pitch
30.2" H x 90.7" W



King

2.66 mm pitch
30.2" H x 143.6" W



Key Product Features

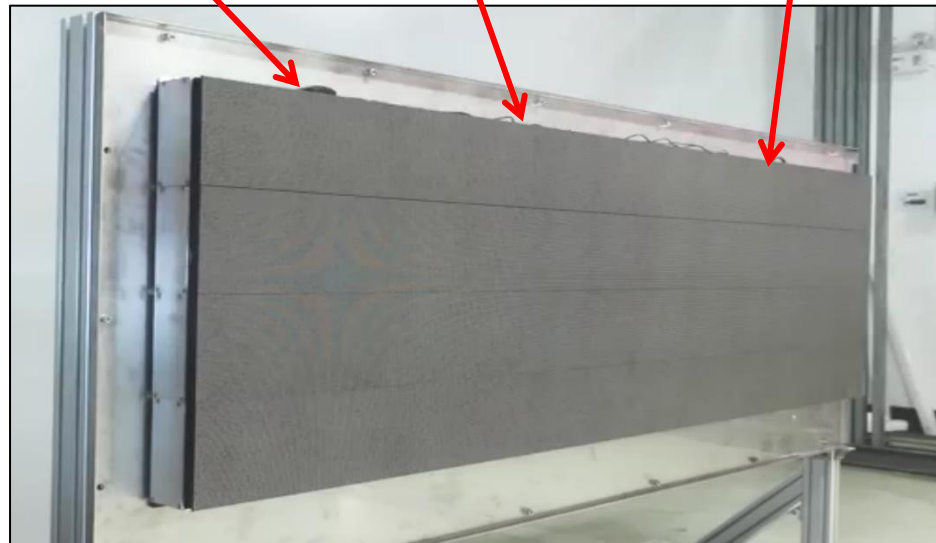
Geofencing Capabilities

Each display has a GPS module and ads can be controlled within geofenced areas. Displays can be controlled with a computer, laptop or cellphone.



Communication

Communication with each display is available through 4G / Wi-Fi/ Lan port or USB disk
Displays come with the AIPS content management system



Weather Proofing

With **IP66** High Ingress Protection, screens perform flawlessly, even in the harshest environment and severest weather conditions.



Key Product Features

Display Parameters

- Brightness: > 4500 Nits
- Refresh rate: 1920 HZ
- Max power consumption: (W/m²) : ≤ 800W

Here is a video link on the unit

[3mm bus side video](#)



Easy to install and maintain

The attachment infrastructure is easy to install and modules stack and lock on top of each other. Here is the link to a detailed installation video;

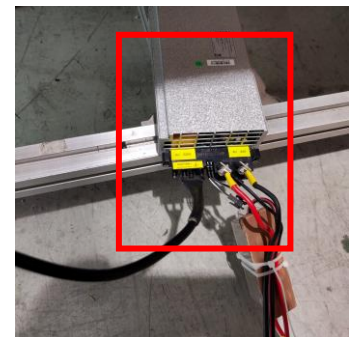
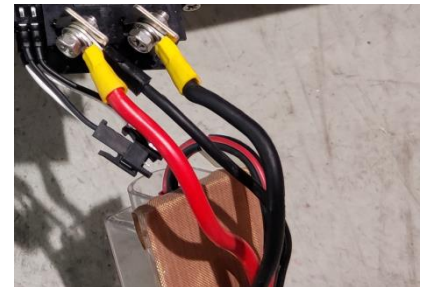
[Bus side LED installation](#)



Power Hook Up

Each screen has a main power cable that connects the LED screen to the power input. The main power cable is connected to the positive and negative poles of the bus power supply (battery/alternator) for power input. (Power on/off is controlled by ACC wire)

The main power cable is connected to the test input power supply and consists of 3 wires. One connects to the positive pole of the power supply (battery/alternator); one connects to the negative pole and the last one connects to the ACC of the bus.



Sales/ Service

Yaham have established a service depot in Los Angeles. This facility will inventory spare parts and provide 24 hour turnaround on replacements or warranty items.

Product Specifications

	Specifications	Queen		King
Module	Pixel Pitch (mm)	2.66		
	Pixel Packaging	SMD 1921		
	Module Dimensions	192 mm (W) x 768 mm (H) 7.56"(W) x 30.2"(H)	192 mm (W) x 576 mm (H) 7.56"(W) x 22.7"(H)	192 mm (W) x 768 mm (H) 7.56"(W) x 30.2"(H)
	Module Resolution	72 (W) x 288 (H)	72 (W) x 216 (H)	72 (W) x 288 (H)
	Pixels per Module	20736	15552	20736
	LED Display Dimensions	2304mm (W) x 768mm (H) 90.7" (W) x 30.2" (H)	1920mm (W) x 576mm (H) 75.6" (W) x 22.7" (H)	3648mm (W) x 768mm (H) 143.6" (W) x 30.2" (H)
	Anticipated LED Life	100,000 hours		
Cabinet	Cabinet Dimensions	2320mm (W) x 800mm (H) x 80mm (D) 91.3" (W) x 31.5" (H) x 3.15" (D)	1936mm (W) x 608mm(H) x 80mm (D) 76.2" (W) x 23.9" (H) x 3.15" (D)	3664mm (W) x 800mm (H) x 80mm (D) 144.2" (W) x 31.5" (H) x 3.15" (D)
	Display Resolution	864 (W) x 288 (H)	720 (W) x 216 (W)	1368 (W) x 288 (H)
	Module Composition	12 (W) x 1 (H)	10 (W) x 1 (H)	19 (W) x 1 (H)
	Weight	50 Kgs 110 lbs	41 Kgs 86 lbs	80 Kgs 176 lbs
	Material	Aluminium		
	Cover	Polycarbonate enclosure		
	Serviceability	Front Servicing		
Visual	Brightness (NITs)	4500		
	Viewing Angles	140 Degrees Vertical, 140 Degrees Horizontal		
	Refresh Rate	1920		
Power	Power Supply	DC: 24V		
	Maximum Power Consumption @ 100% white	1000 W/Sq. M. 92.9 W/Sq. ft.		
	Average Power Consumption	500 W/Sq. M. 46.2 W/ Sq. ft.		
Ratings Certifications	Communication	Wi- Fi/4G, Qualcomm MSM8909 processor, Android		
	Environmental Rating	IP 66		
	Operating Temperature	-40c to +75c		
	Storage Temperature	-40c to +80c		
	Working Humidity	0% - 95%		