



High Resolution, **LED**
Transit Shelters have
arrived!

LCD products have dominated this segment for years but have struggled with longevity in high heat environments and brightness, especially in direct sunlight.

About Yaham

Yaham, a world leader in both exterior and interior LED products are proud to introduce the **1.92 mm CHO series** product for Transit Shelter and exterior Kiosk applications.

The primary challenge with LED's is getting a pixel resolution that is fine enough for pedestrian viewing. With the **1.92mm CHO display**, images are Spectacular, Colors are dramatic and Bold from any distance. 2-3" copy has minimal pixelization and is crystal clear making it ideal for pedestrian based information and advertising applications!

About Level 9

Level 9 are a full service integrator that provides solutions for a range of Digital signage deployments. We provide unique, end to end solutions that are economical and user friendly while focusing on longevity and ROI.

CHO
SERIES



The Yaham, CHO product offers superiority to an LCD solution in almost every single area;

- **4000 Nit light output** vs 2500-3000 Nits for most exterior LCD's
- **IP65** rating. This rating extends product life and is vastly superior to most LCD kiosk displays which are IP56
- IK10 high impact glass that sits in front of the LED' protecting key components
- Deeper, richer, bolder colors, creating a much more dynamic and impactful display that gets attention!
- Expected LED life of 10+ years with minimal degradation, even in high stress environments. LCD's have a maximum 3-4 year life span in direct sunlight
- Super thin, 3" thick LED cabinet profile
- 140/140 Viewing angles
- Front serviceable
- Operates off of existing power feeds. No special service is necessary
- -20c to +50c operating temperatures for deployment in any environment
- Telemetry suite and cameras available
- Full electrical certification- CE/CB, FCC, UL, KC, PSE,BIS, NOM , RCM, IECCE



Lightweight cabinet



High brightness



Customizable



IP65 protection



Stable and reliable

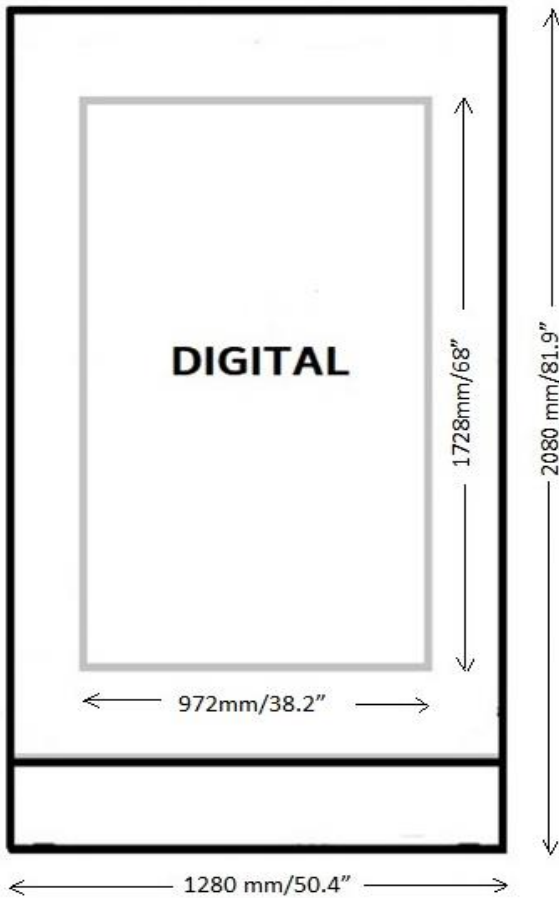


Green and energy efficient

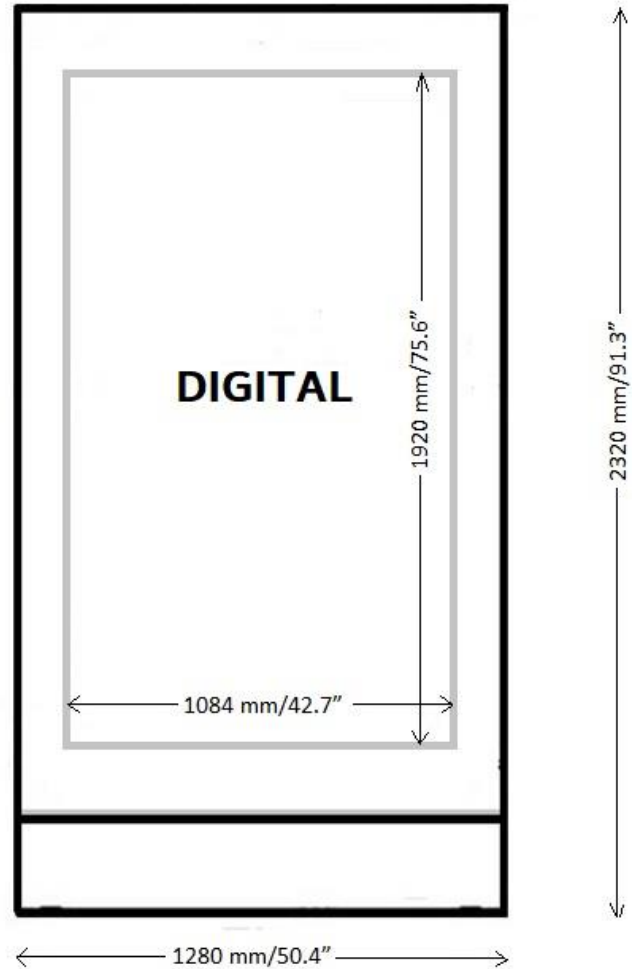
LED Size Options

The displays come in two different sizes, a 75" and 86" LCD equivalency. Units can be customized for specific applications as required

75" Enclosure configuration



86" enclosure configuration



75" Equivalent LED Size and Matrix- VISUAL

- 972 mm W x 1728mm H
- 38.2" W x 68" H
- Pixel matrix – 506 x 900
- Total pixels- 455,400

86" Equivalent LED Size and Matrix- VISUAL

- 1084 mm W x 1920 mm H
- 42.7" W x 75.6" H
- Pixel matrix – 565 x 1000
- Total pixels- 565,000

Configuration Options

Our goal is to enable an existing “static” Transit Shelter enclosure to be retrofitted with either a 75” or an 86” LED panel.

We plan on providing two different solutions- Manufacturing a custom enclosure to meet your design requirements or providing a turn key, finished enclosure that can replace the existing static ad case in the shelter.

- 1. Digital static combination with enclosure-** This consists of a digital screen on one side and a static, backlit face on the other. Available in either the 75” or 86” version. Base is optional and customizable

Digital



Static



- 2. Double Digital with enclosure-** consists of digital on both sides. Available in the 75” or 86” version. Base is optional and can be customized

Digital



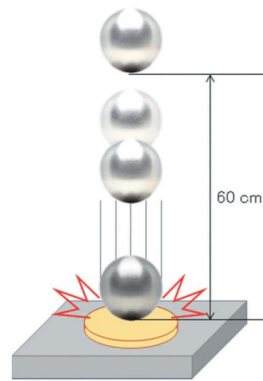
Digital



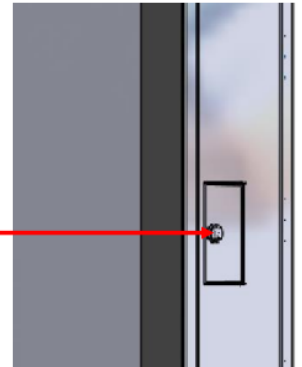
Security Features

Each Digital screen is mounted behind a vandal resistant glass sheet to minimize damage to the LED in case of breakage

- High impact resistant glass protects the screen from vandalism and damage from flying debris (IK10 rated is optional)
- Double door locks secure critical parts

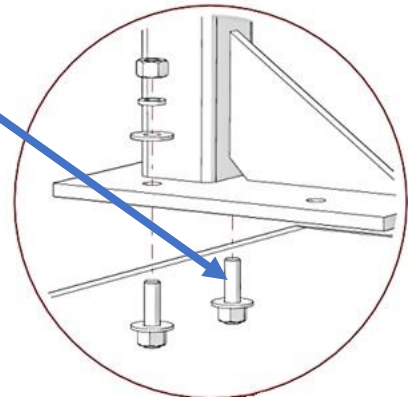
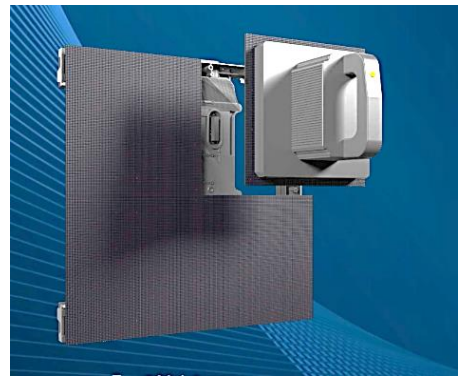


Side hatch and filter vault access with IP66 triangle latch



Maintenance

- Front access from either side simplifies access to critical parts
- Replaceable LED modules which can be swapped out in field
- Telemetry suite to monitor key operating parameters (optional)
- Cameras (optional)
- We supply leveling bolts with each display allowing the enclosure to be mounted perfectly every time



Warranty

Each display comes with a **2 year warranty** with LED's rated to last 10 years or longer



Finance Options

Our goal is to make the transition from static to digital as easy as possible. We are offering multiple finance options including a multi year lease, lease to own or purchase only.

We can customize the financing options to make the transition as seamless as possible. Contact us for more information

Product Specifications

| | Specifications | 75" Equivalency | | 85/86" Equivalency | | |
|---------------------------|---|--|--|--|-------------------|--|
| Module | Pixel Pitch (mm) | 1.92 | 2.667 | 1.92 | 2.667 | |
| | Pixel Packaging | SMD 1415 | | | | |
| | Module Dimensions | 192 mm (W) x 384 mm (H) 7.6" (W) x 15.1" (H) | | | | |
| | Module Resolution | 100 (W) x 200 (H) | 72 (W) x 144 (H) | 100 (W) x 200 (H) | 72 (W) x 144 (H) | |
| | Pixels per Module | 1.92 | 20000 | | | |
| | | 2.667 | 10368 | | | |
| | Anticipated LED Life | 100,000 hours | | | | |
| Cabinet /LED's | Cabinet Dimensions | 1280 mm (W) x 2080 mm(H) 50.4" (W) x 81.9" (H) | | 1280 mm (W) x 2320 mm(H) 50.4" (W) x 91.3" (H) | | |
| | LED Display Dimensions | 1152 mm (W) x 1728 mm (H) 45.3" (W) x 68" (H) | | 1152 mm (W) x 1920 mm (H) 45.3" (W) x 75.6" (H) | | |
| | Module Composition | 3 (W) x 9 (H) | | 6 (W) x 5(H) | | |
| | LED Display Dimensions-(Opening) | 972 mm (W) x 1728 mm (H) | | 1084 mm (W) x 1920 mm (H) | | |
| | LED Display Resolution (Opening) | 506 (W) x 900 (H) | 364 (W) x 648 (H) | 565 (W) x 1000 (H) | 406 (W) x 720 (H) | |
| | Weight | 190 Kgs, 418 lbs | | 235 Kgs , 517 lbs | | |
| | Material | Modules | Die Cast Aluminium | | | |
| | | Enclosure | Powder Coated steel | | | |
| | | Front face | Vandal resistant heat tempered glass- (Optional IK10) IR/AR coatings for extreme outdoor environments | | | |
| | | Serviceability | Front Servicing, locking mechanism | | | |
| | Backlit Static Panel | Trim 48.5' (W) x 72" (H) Live 46.5" (W) x 70" (H) | | | | |
| Visual | Brightness (NITs) | 4000 | | | | |
| | Viewing Angles | 140 Degrees Vertical, 140 Degrees Horizontal | | | | |
| | Contrast Ratio | 4500 | | | | |
| Power | Power Supply | 100- 240 VAC | | | | |
| | Maximum Power Consumption | 1100 W | | 1350 W | | |
| | Typical Power Consumption | 450W | | 540W | | |
| Ratings Certifications | Communication | Ethernet or Router | | | | |
| | Media Player | Windows or Android- Customer to specify | | | | |
| | Environmental Rating | Enclosure | IP 56 (filtration system) | | | |
| | | LED's | IP 65 | | | |
| | Operating Temperature | -20c to +50c | | | | |
| | Storage Temperature | -30c to +60c | | | | |
| | Working Humidity | 0% - 95% | | | | |
| | Options | Cameras, Telemetry suite | | | | |
| Warranty | 2 years on parts, extended warranty available | | | | | |